



LAPORTE COUNTY

HEALTH DEPARTMENT



2009 Annual Report

April 2010

LAPORTE COUNTY BOARD OF COMMISSIONERS

Barbara Huston, President	Jan 2009—Dec 2012
Michael Bohacek, Vice President	Jan 2007—Dec 2010
Kenneth Layton	Jan 2009—Dec 2012

LAPORTE COUNTY COUNCIL

Mark Yagelski, President	Jan 2007—Dec 2010
Matthew Bernacchi	Jan 2009—Dec 2012
Earl Cunningham	Jan 2007—Dec 2010
Scott Ford	Jan 2009—Dec 2012
Terry Garner	Jan 2007—Dec 2010
Richard Mrozinski	Jan 2007—Dec 2010
Lois Sosinski	Jan 2009—Dec 2012

LAPORTE COUNTY BOARD OF HEALTH

Michael Sandy, Chairperson	Jan 2007—Dec 2010
Amarnath Agrawal, MD	Jan 2009—Dec 2012
Rakesh Gupta, MD	Jan 2006—Dec 2009
Michael Jones	Jan 2008—Dec 2011
Doretha Sanders	Jan 2008—Dec 2011
J. Willard Simcox	Jan 2009—Dec 2012
Sherry Waters	Jan 2006—Dec 2009

LAPORTE COUNTY HEALTH OFFICER

Charles T. Janovsky, MD	Jan 2006—Dec 2009
-------------------------	-------------------

HEALTH DEPARTMENT ADMINISTRATOR

Paul E. Trost

HEALTH DEPARTMENT ATTORNEY

Christopher Willoughby

HEALTH DEPARTMENT ADMINISTRATION

Charles T. Janovsky, MD, Health Officer
Paul E. Trost, Administrator
Lana Buckles, Chief Sanitarian/Michigan City Branch Manager
Nancy L. Meehan, Administrative Assistant/Office Manager
Joanne Hardacker, RN, Nursing Supervisor
Tony Mancuso, Environmental Supervisor

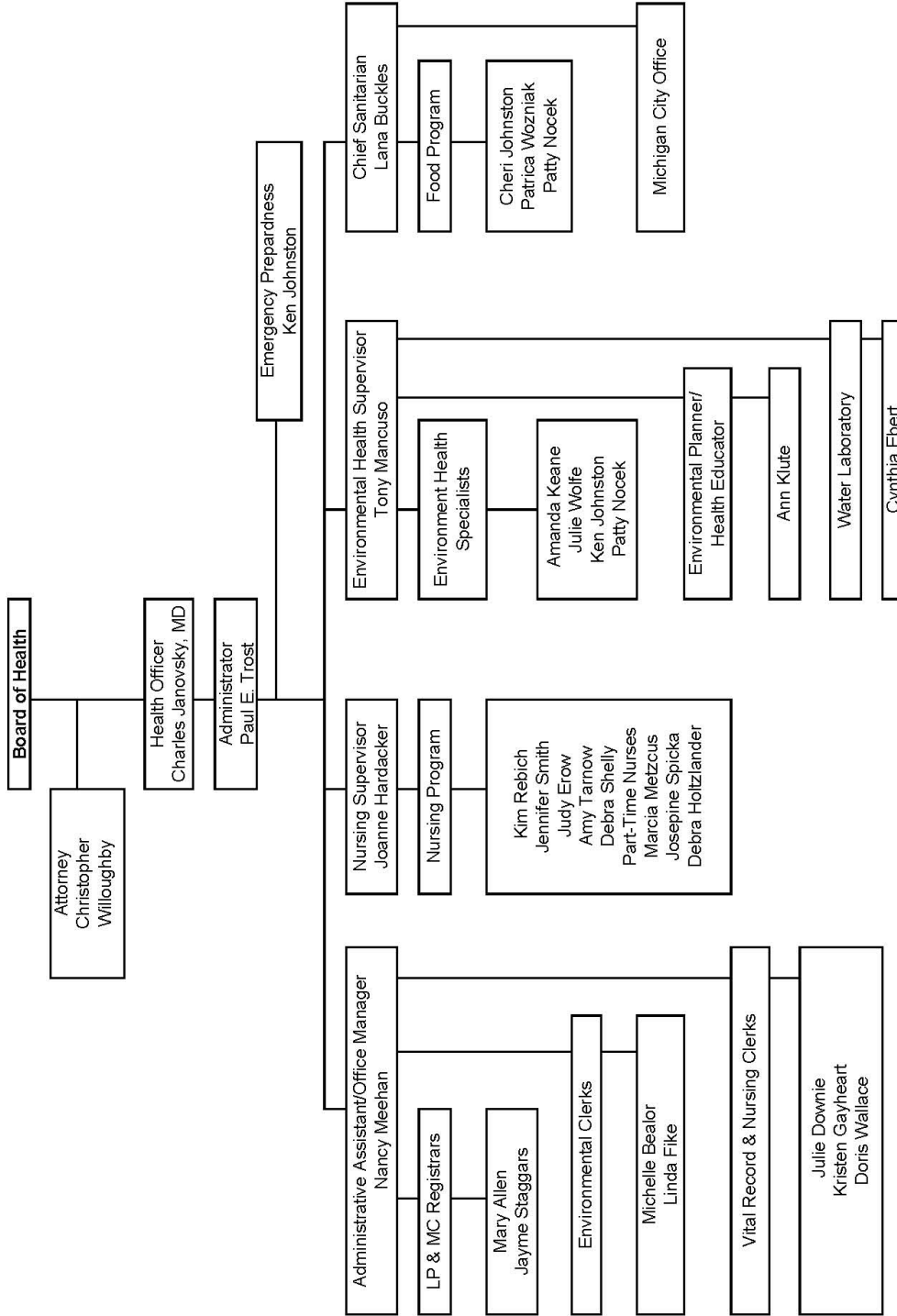
STAFF MEMBERS

Mary Allen, Vital Records Registrar
Michelle Bealor, Environmental Health Services Secretary
Julie Davies Downie, Vital Records Secretary
Cynthia Ebert, Laboratorian
Judy Erow, RN, Public Health Nurse
Linda Fike, Environmental Health Services Secretary
Kristen Gayheart, Vital Record Secretary
Debra Holtzlander, Part-time Public Health Nurse
Cheri Johnston, Food Environmentalist
Ken Johnston, Environmental Health Specialist/Preparedness Planner
Amanda Keane, Environmental Health Specialist
Ann Klute, Environmental Planner/Health Educator
Marcia Metzcus, RN, Part-time Public Health Nurse
Patty Nocek, Environmental/Food Health Specialist
Kimberly Rebich, RN, Public Health Nurse
Debra Shelley, RN, Public Health Nurse
Jennifer Smith, RN, Public Health Nurse
Josephine Spicka, RN, Part-time Public Health Nurse
Jayme Staggers, Vital Records Registrar
Amy Tarnow, RN, Public Health Nurse
Doris Wallace, Nursing Section Secretary
Julie Wolf, Environmental Health Specialist
Patricia Wozniak, Food Environmentalist

INTERNS

Jordan Amor – Environmental
Karolina Grzesiak – GIS
Hannah Rebich – Clerical
Erin Rissler – Nursing
Taylor Scarborough – Environmental

Organizational Chart of the "LaPorte County Health Department"



HEALTH DEPARTMENT OPERATION

HEALTH BOARD: The LaPorte County Board of Health consists of seven (7) members who serve four-year terms on a staggered basis and are appointed by the LaPorte County Board of Commissioners. The Health Board elects its own officers each year. Michael Sandy was the President of the Health Board for 2009

HEALTH OFFICER: The Health Officer serves a four-year term in a part-time capacity and is appointed by the Board of Health. In 2005 Dr. Charles T. Janovsky was reappointed by the Health Board to serve a second term, 2006 thru 2009.

ADMINISTRATOR: The Administrator of the LaPorte County Health Department manages the daily operations of the Health Department and is appointed by the Board of Health. The current administrator is Mr. Paul E. Trost and he has served in this position since June of 2002.

STAFF: In 2009 the LaPorte County Health Department operated with a staff of 25 full-time employees, 3 part-time employees, and 5 interns.

DEPARTMENTS: The Health Department has seven sections that provide various services to the LaPorte County area. The following is a brief description of each section.

VITAL RECORDS: Vital Records sections are located in both offices. This section issues and maintains birth and death records dating back to 1882 for persons who were born or died in LaPorte County. The section also does genealogy searches and maintains animal bite reports.

NURSING SERVICES: Located in both offices, our Nursing section offers immunizations, communicable disease control and investigation, lead screening, pregnancy testing and counseling, tuberculosis testing and counseling, blood profile screenings, HIV/AIDS testing and counseling, and some travel immunizations. The section also provides STD testing and counseling in conjunction with the Franklin Clinic in Michigan City and Community Health Center in LaPorte.

ON-SITE SEWAGE SYSTEM (OSS): The OSS Section is located in the LaPorte office and issues septic permits for new construction and for repairs to older septic systems. The section also investigates complaints regarding failed septic systems.

WATER LABORATORY: The Water Laboratory is located in the LaPorte office and tests water samples from drinking water sources, surface water sources including area bathing beaches, and public swimming pools, spas, and whirlpools. The following tests are offered on water samples: Total Coliform with E. coli confirmation, E. coli (for surface water), lead, nitrate, nitrite, iron, phosphorus, and suspended solids.

ENVIRONMENTAL: The Environmental section is located in the LaPorte Office. This section investigates complaints and advises residents on a variety of topics such as sub-standard housing, rodent/vector infestation and harborage, open burning, trash and garbage, unsanitary living conditions and hazardous waste. The section also inspects and issues permits for public and semi-public pools and spas.

FOOD: Located in the Michigan City office, the Food section inspects and issues permits to food vendors such as restaurants, grocery stores, convenience stores, and mobile and temporary food vendors. The section also investigates food-related complaints and conducts food sanitation classes.

EMERGENCY PREPAREDNESS: Located in the LaPorte Office this new grant funded position of Emergency Preparedness Coordinator is charged with the responsibility of developing plans for all types of health emergencies and to coordinate this activity with all other community, district and state agencies.

Main Office 809 State Street, Suite 401A LaPorte IN 46350-3385 219-326-6808 ext 2200 219-325-8628 (fax)	LaPorte County Health Department office hours 8 a.m. to 4 p.m., Monday through Friday.	Branch Office 302 West 8th Street, Suite 3 Michigan City, IN 46360 219-874-5611 ext 7780 219-873-3018 (fax) 219-879-3177 (TB fax)
---	--	---

GENERAL HEALTH FUND**219****STATEMENT OF RECIEPTS**

	2006	2007	2008	2009
Property Tax	828,803.14	172,085.80	1,419,663.53	842,708.43
Financial Instution Tax	3,277.00	4,432.00	0.00	0.00
License Excise Tax	69,734.95	70,242.71	0.00	170,027.40
CVET	7,286.60	9,982.12	0.00	0.00
Permits(Water, Food, Septic, etc.)	177,032.00	150,574.00	166,323.01	162,395.00
Immunizations	5,776.85	5,635.50	6,737.60	8,102.80
Birth & Death Certificates	105,629.50	102,530.75	96,380.64	97,370.70
Misc. ?Reinb./Reciepts	3,507.73	2,089.75	2,920.95	5,135.44
Total Reciepts	\$1,201,047.77	\$517,572.63	\$1,692,025.73	\$1,285,739.77

STATEMENT OF EXPENDITURES**PERSONAL SERVICES**

Salaries	827,815.63	870,817.09	899,202.83	899,202.83
OASI Withheld	49,043.52	50,912.00	52,613.68	52,088.97
Medicare Withheld	11,469.89	11,907.10	12,305.38	12,182.31
County Retirement Contribution	45,594.15	50,194.45	56,692.34	76,236.82
Employee Group Insurance	152,289.49	168,684.72	187,055.65	216,578.12
Compesation - Board	2,100.00	2,520.00	2,160.00	2,160.00
Compensation - Health Officer	21,400.00	0.00	0.00	0.00
Unemployment Compensation	0.00	3,120.00	6,668.00	2,091.05
Total Personal Services	\$1,109,712.68	\$1,158,155.36	\$1,216,697.88	\$1,260,540.10

SUPPLIES

Office Supplies	7,426.95	8,904.52	8,579.43	6,605.59
Equipment (Service/Repair)	4,745.32	5,872.00	2,294.83	6,595.39
Excess levy/claims	22,481.00	0.00	0.00	1,915.00
Microfilm/Phoocopy/Claims	0.00	2,222.50	405.56	2,186.41
Laboratory Supplies	31,536.02	32,917.25	34,723.39	34,733.34
Education Supplies	2,765.65	1,805.45	3,401.16	2,388.14
Environmental Supplies	6,807.82	8,494.02	7,567.12	10,626.61
Total Supplies	\$75,762.76	\$60,215.74	\$56,971.49	\$65,050.48

SERVICES

Professional Services - Health Officer	0.00	21,400.00	22,986.96	22,999.22
Professional Health care Services	24,509.07	35,031.97	37,931.60	37,167.66
Postage	6,049.26	7,098.28	9,363.70	9,094.32
Mileage	24,457.94	22,810.94	22,151.52	19,200.12
Telephone	4,305.19	3,531.28	5,507.78	6,853.84
Leases and Equipment	7,262.36	6,431.21	2,785.53	0.00
Dues & Subscriptions	649.05	987.45	1,892.99	1,604.65
Publishing/Printing	120.57	3,345.99	905.34	3,637.39
Education & Training	9,431.06	5,208.55	8,393.52	6,594.99
Litigation Expense	6,375.00	4,050.00	2,750.00	3,454.00
other/transfer	681.25	0.00	0.00	672.00
Total Services	\$83,840.75	\$109,895.67	\$114,668.94	\$111,278.19

CAPITOL OUTLAYS

Office Equipment	0.00	4,077.00	0.00	9,997.99
Security System	716.50	432.00	432.00	0.00
Total Capitol Outlays	\$716.50	\$4,509.00	\$432.00	\$9,997.99

TOTAL EXPENDITURES

\$1,270,032.69	\$1,332,775.77	\$1,388,770.31	\$1,446,866.76
-----------------------	-----------------------	-----------------------	-----------------------

LOCAL HEALTH MAINTENANCE**520****STATEMENT OF RECIEPTS**

	2006	2007	2008	2009
Grant Money from ISDH	71,539.85	90,840.00	54,505.00	54,504.00
Carryover	87,095.36	106,170.97	132,063.79	115,903.98
Misc Reciepts	0.00	0.00	1,000.00	500.00
Total Reciepts	\$158,635.21	\$197,010.97	\$187,568.79	\$170,907.98

STATEMENT OF EXPENDITURES**PERSONAL SERVICES**

Salaries	30,882.95	42,082.38	46,835.47	51,828.59
OASI Withheld	1,856.41	2,548.15	2,837.74	3,146.65
Medicare Withheld	434.12	595.93	663.72	736.00
County Retirement Contribution	1,752.89	1,419.47	2,382.30	3,198.75
Employee Group Insurance	3,768.73	4,907.60	4,965.28	5,448.52
Total Personal Services	\$38,695.10	\$51,553.53	\$57,684.51	\$64,358.51

SUPPLIES

Animal/Vector Supplies	1,327.98	1,051.62	1,563.38	2,750.37
Total Supplies	\$1,327.98	\$1,051.62	\$1,563.38	\$2,750.37

SERVICES

Tech/Software	0.00	0.00	0.00	16,520.51
Mileage/Travel	3,873.92	3,855.85	3,930.74	3,284.47
Total Services	\$3,873.92	\$3,855.85	\$3,930.74	\$19,804.98

CAPITOL OUTLAYS

Office Equipment/Furniture/Computer	8,567.24	8,486.18	8,486.18	14,669.81
Total Capitol Outlays	\$8,567.24	\$8,486.18	\$8,486.18	\$14,669.81
<u>TOTAL EXPENDITURES</u>	<u>\$52,464.24</u>	<u>\$64,947.18</u>	<u>\$71,664.81</u>	<u>\$101,583.67</u>

COMMUNICABLE DISEASE FUND**526****STATEMENT OF RECIEPTS & EXPENDITURES**

	2006	2007	2008	2009
Carryover	44,696.76	20,962.54	25,929.44	25,412.86
Receipts	60,758.55	49,947.50	53,411.22	65,533.18
Expenditures	84,492.77	44,981.02	53,927.80	50,132.34
<u>YEAR END BALANCE</u>	<u>\$20,962.54</u>	<u>\$25,929.02</u>	<u>\$25,412.86</u>	<u>\$40,813.70</u>

BEACH ACT GRANT**370****STATEMENT OF RECIEPTS & EXPENDITURES**

	2006	2007	2008	2008
Grant Money from IDEM	47,387.37	11,128.56	28,711.94	17,424.18
Carryover	-27,645.55	7,355.13	8,175.74	22,741.68
Expenditures	12,386.69	10,307.95	14,146.00	22,253.08
<u>Year End Balance</u>	<u>\$7,355.13</u>	<u>\$8,175.74</u>	<u>\$22,741.68</u>	<u>\$17,912.78</u>

STATEMENT OF EXPENDITURES**PERSONAL SERVICES**

Salaries	3,460.00	3,197.41	3,236.23	4,131.00
OASI Withheld	214.52	198.24	200.65	256.12
Medicare Withheld	50.17	46.36	46.94	59.90
Total Personal Services	\$3,724.69	\$3,442.01	\$3,483.82	\$4,447.02

SUPPLIES/SERVICES/OTHER

Claims	8,662.00	6,865.94	10,662.18	17,806.06
Total Other	\$8,662.00	\$6,865.94	\$10,662.18	\$17,806.06
TOTAL EXPENDITURES	\$12,386.69	\$10,307.95	\$14,146.00	\$22,253.08

EMERGENCY PREPAREDNESS GRANT**293****STATEMENT OF RECIEPTS & EXPENDITURES**

	2006	2007	2008	2009
Grant Money from ISDH	67,636.14	55,306.95	36,375.00	0.00
Carryover	20,599.30	33,630.54	40,502.78	29,834.77
Expenditures	54,604.90	48,434.71	47,043.01	22,414.45
<u>Year End Balance</u>	<u>\$33,630.54</u>	<u>\$40,502.78</u>	<u>\$29,834.77</u>	<u>\$7,420.32</u>

STATEMENT OF EXPENDITURES**PERSONAL SERVICES**

Salaries	33,998.90	29,804.06	0.00	0.00
OASI Withheld	2,013.50	1,739.76	0.00	0.00
Medicare Withheld	470.88	406.85	0.00	0.00
County Retirement Contribution	1,832.61	2,112.17	254.01	0.00
Employee Group Insurance	10,354.56	9,628.97	0.00	0.00
Total Personal Services	\$48,670.45	\$43,691.81	\$254.01	\$0.00

SUPPLIES/SERVICES/OTHER

Claims	5,934.45	4,742.90	46,789.00	22,414.45
Total Other	\$5,934.45	\$4,742.90	\$46,789.00	\$22,414.45
TOTAL EXPENDITURES	\$54,604.90	\$48,434.71	\$47,043.01	\$22,414.45

TOBACCO MASTER SETTLEMENT**305****STATEMENT OF RECIEPTS & EXPENDITURES****2006****2007****2008****2009**

Carryover	43,809.33	56,465.79	66,745.69	75,284.76
Receipts	43,721.63	48,323.77	48,884.14	0.00
Expenditures	31,065.17	38,043.87	40,345.07	39,277.34
<u>YEAR END BALANCE</u>	\$56,465.79	\$66,745.69	\$75,284.76	\$36,007.42

H1N1 GRANT FUND**625****STATEMENT OF RECIEPTS & EXPENDITURES****2009**

Carryover	0.00
Receipts	75,843.25
Expenditures	137,341.82
<u>YEAR END BALANCE</u>	-\$61,498.57

ENVIRONMENTAL HEALTH FUND**519****STATEMENT OF RECIEPTS & EXPENDITURES****2006****2007****2008****2009**

Carryover	58,873.67	58,873.67	58,873.67	58,873.67
Receipts	0.00	0.00	0.00	0.00
Expenditures	0.00	0.00	0.00	0.00
<u>YEAR END BALANCE</u>	\$58,873.67	\$58,873.67	\$58,873.67	\$58,873.67

NURSING SERVICES

2009-2010 H1N1 INFLUENZA PANDEMIC

The emergence of Human Influenza A H1N1 in the Spring of 2009 brought many challenges to the department. Over four years of pandemic planning with our partners throughout LaPorte County and Emergency Preparedness District One proved valuable to response. The Health Department activated the Emergency Operations Center to address public education, review response with medical providers, and prepare for receipt of the Strategic National Stockpile.

With the second wave in the Fall of 2009 illness throughout the community rose rapidly. Most persons experienced only mild illness, but this still had a significant impact on businesses, medical providers, and schools. There were three deaths in persons who had other significant health conditions that put them at great risk for influenza complications. Daily reports on emergency room and outpatient clinics and daily absenteeism reports from all schools provided valuable information on where and how significantly the burden of disease was in the county.

The Emergency Operation Center was activated once again. Personal protective equipment and antiviral medication were distributed to medical partners facing shortages.

Final planning for school based clinics was done in advance of the first shipments of vaccine which was released to public health departments in mid-October.

Once vaccine was received the Department distributed it through school based clinics, mass clinics for the public and evening clinics at both offices. Vaccination of children in schools was accomplished by January. Evening clinics continued through February until demand was significantly less.

Nursing services were temporarily suspended during the second wave except for regular immunization clinics. However, clinics were accomplished by appointments to prevent the aggregation of people in the department, and thus reduce transmission.

Nursing services were instituted again in full on March 1, 2010.

IMMUNIZATION SERVICES

The LaPorte County Health Department strives to increase immunization rates and prevent disease by providing quality vaccination services and minimizing barriers to immunizations. In addition to providing general childhood and adult immunizations, the department promotes targeted vaccination to high risk persons, particularly international travelers and patients seen for confidential services at sexually transmitted infection clinic sites.

Immunizations are offered every Monday and Tuesday from 8:30AM-11AM and from 12:00PM-3:00PM at the main office in LaPorte and the branch office in Michigan City, respectively.

Childhood Immunizations

The LaPorte County Health Department administers vaccinations in accordance with recommendations of the Advisory Committee for Immunization Practices (ACIP) of the Centers for Disease Control and Prevention (CDC). The staff regularly participates in educational opportunities offered by the Indiana State Department of Health, the Centers for Disease Control and Prevention (CDC), and drug manufacturers.

The LaPorte County Health Department participates in the Vaccine for Children program (VFC). This program is a federally funded program that provides eligible children recommended vaccines at no cost. The federal government pays for the vaccines. The VFC program was created by the Omnibus Budget Reconciliation Act (OBRA) of 1993 and began October 11, 1994. The program removes barriers for parents to immunize their children.

Children from birth thru 18 years of age can receive vaccines through the VFC program if they are at least one of the following:

- Eligible for Medicaid
- Without health insurance
- American Indian or Alaska Native
- Underinsured (have health insurance that does not cover vaccines)

The LaPorte County Health Department entered into an agreement with a Federally Qualified Health Center (FQHC) in 2009. This "Delegation of Authority" allows a local health department to provide VFC vaccine at no charge to "underinsured" children up to age 19.

The following childhood vaccines are available through the LaPorte County Health Department:

DtaP (Diphtheria, Tetanus, Pertussis)

DT (Diphtheria, Pertussis)

Td (Tetanus, Diphtheria)

Hib (Haemophilus Influenza B)

Prevnar (Pneumococcal)

Meningococcal

Rotavirus

Tdap (Adolescent Diphtheria, Tetanus, Pertussis)

IPV (Polio)

MMR (Measles, Mumps, Rubella)

Hepatitis B

Varicella (Chicken Pox)

Influenza

Hepatitis A

Gardasil

Adult Immunizations

The following adult vaccines are available through the LaPorte County Health Department:

Td (Tetanus, Diphtheria)

MMR (Measles, Mumps, Rubella)

Hepatitis B Vaccine

Hepatitis A vaccine

Gardasil

Influenza

Meningococcal

Polio

Zostavax (shingles vaccine)

International Travel

The LaPorte County Health Department is a designated Yellow Fever Vaccination Center. Persons traveling outside of the United States are counseled regarding recommended and required vaccines after review of the person's itinerary by one of the staff nurses. Recommendations are made based on current information published by the Centers for Disease Control and Prevention (CDC). Current outbreaks are also taken into consideration. Although malaria prophylaxis is not available through the department, travelers are given recommendations, based on where they are traveling, to obtain appropriate medication from their physician. The following vaccines are provided to travelers:

Yellow Fever

Hepatitis A

Measles, Mumps, and Rubella

Polio

Typhoid

Hepatitis B

Tetanus-Diphtheria-Pertussis

Meningococcal

114 people received vaccinations for international travel in 2009.

There were 10,017 patient visits and 18,970 immunizations provided during 2009. Not included in this figure is the total number of H1N1 vaccines given in the 3rd Quarter of 2009 which was 18,410.

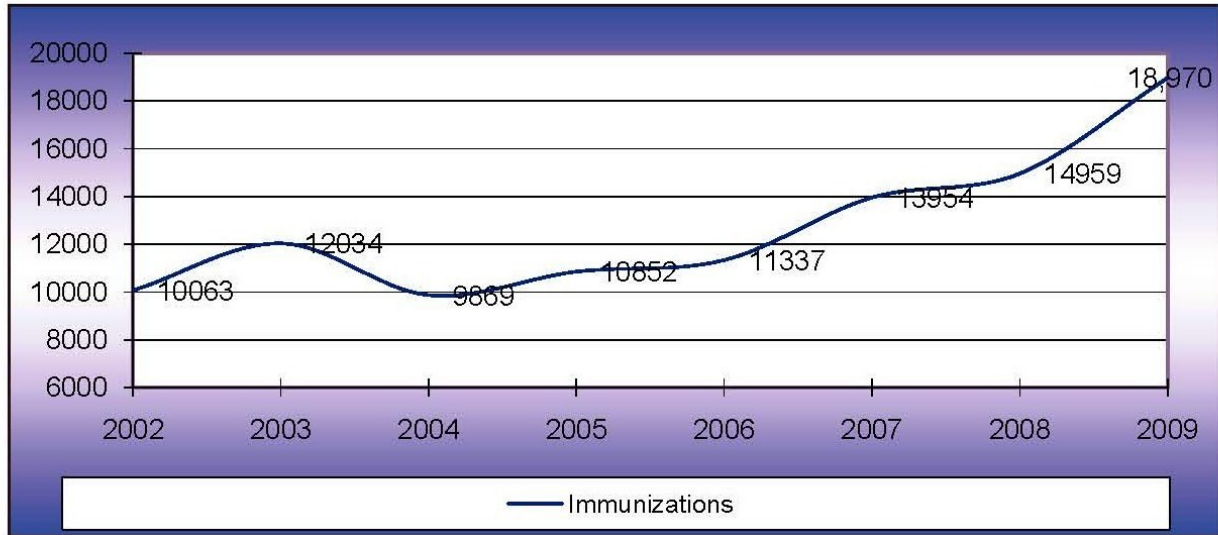


Figure 1: Number of vaccines dispensed by year
(Childhood, Adult, Flu Clinics, Travel, confidential services)

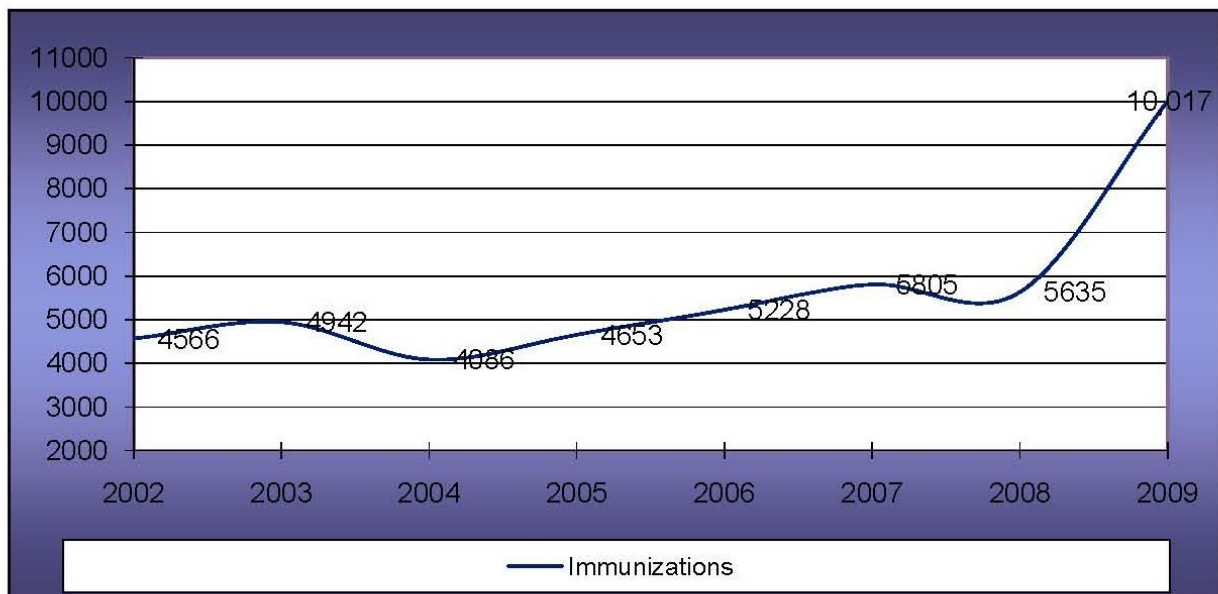


Figure 2: Number of patient visits by year
(Childhood, Adult, Flu Clinics, Travel, confidential services)

COMMUNICABLE DISEASE

The Communicable Disease Reporting Rule for Physicians, Hospitals, and Laboratories under Indiana Code 16-41-2-1 allows the Indiana State Department of Health to establish reporting, monitoring, and preventive procedures for communicable diseases. Upon receiving a communicable disease report, local health officers must investigate the report within a specified time frame outlined in Section 47 of the Rule. The local health department in the jurisdiction where the patient resides is responsible for epidemiological investigation and instituting control measures.

Diseases that are reportable under the Rule meet one or more of the following criteria:

- 1) Nationally reportable disease
- 2) Vaccine preventable disease
- 3) Emerging infectious disease
- 4) Significant organism with emerging drug resistance
- 5) Disease with high bioterrorism potential
- 6) Disease that requires a public health response

Below is a list of the diseases that were directly reported to the LaPorte County Health Department in 2009.*

Campylobacteriosis	8
Chlamydia	275
Cryptosporidiosis	0
Escherichia coli	2
Gonorrhea	69
Hepatitis, viral, Type A	1
Hepatitis, viral, Type B acute	2
Hepatitis, viral, Type B chronic	6
Hepatitis, viral, Type B, pregnant woman	0
Hepatitis, viral, Type C (chronic)	88
Hepatitis, viral, Type C (acute)	1
Haemophilus Influenza	0
Histoplasmosis	3
Legionellosis	0
Listeriosis	6
Lyme disease	5
Meningitis- aseptic	1
Meningococcal- invasive	0
Mumps	0
Pertussis	2
Salmonellosis	9
Shigellosis	2
Streptococcus, Group A, invasive (invasive)	2
Streptococcus pneumonia, invasive	12
Streptococcus, Group B, invasive	6
Syphilis	18
West Nile	0
Toxic Shock Syndrome	3

***Note:**

Some physicians and laboratories report directly to the Indiana State Department. Therefore, the above data may represent lower numbers than the actual occurrence of these diseases in the county.

CONFIDENTIAL SERVICES

The LaPorte County Health Department remains committed to providing services for the prevention and control of sexually transmitted diseases. Two clinics are held weekly in off site locations in Michigan City and LaPorte on Thursdays and Wednesdays, respectively. Appointments are advisable. Clients receive examinations performed by a physician or nurse practitioner, diagnostic services, treatment, and referrals at no cost. A disease intervention specialist provides HIV counseling during clinics. The department also performs a risk assessment on each client who presents at the clinics to determine eligibility for Hepatitis A and/or Hepatitis B vaccine.

122 people were served in the clinics in 2009. Lab Tests are done at no charge to the client and are funded by the Indiana Family Health Council. 157 patients received testing and 55 patients were vaccinated with Hepatitis A and/or Hepatitis B vaccines.

COMPREHENSIVE BLOOD PROFILE

The Blood Chemistry Profile is offered once a month at both offices. This low-cost preventative health care service provides the client and the physician with valuable information concerning a person's overall health. Clients are advised to fast for 12 hours prior to testing. The health department provides copies of the test results to the client and the physician.

The Blood Chemistry Profile includes the following tests:

Calcium	Cholesterol
Phosphorous	Triglycerides
Chloride	SGPT
Potassium	GGT
Sodium	Alkaline Phosphatase
AST (SGOT)	Bilirubin
LDH	Albumin
BUN Creatinine Ratio	Albumin/Globulin Ratio
BUN	Globulin
Creatinine	Protein
HDL	Glucose
LDL	Iron
VLDL	Uric Acid

489 people received the blood profile in 2009. 30 patients were referred to their physicians for follow up of abnormal lab results.

TUBERCULOSIS PREVENTION AND CONTROL

The overall priorities for the treatment of tuberculosis are early identification and complete treatment of infectious patients and minimizing transmission of *Mycobacterium tuberculosis* to other persons. The TB Case Manager works under the supervision and guidance of the TB Clinician and Health Officer and assures that complete and appropriate information regarding each patient is shared with the Indiana State Department of Health TB Program in a timely fashion.

All persons with active Tuberculosis (infectious) receive medications by "Directly Observed Therapy" to ensure completion of treatment. Patients remain under the care of both the health department and their physician until this is accomplished.

Contact investigation to identify all persons exposed to tuberculosis is the second priority of tuberculosis control. Intensive efforts are made to identify untreated individuals who are infected so that they will not become infectious. Contact investigations are done through extensive interviewing and follow up of all identified contacts with TB skin testing. Persons found to have latent TB infection (non-infectious) also receive medications free of charge through the health department.

In 2009, there were 2 tuberculosis cases. 97 contacts were identified and tested. The department reviews uninsured patients through the monthly chest clinic.

LEAD PROGRAM

Lead testing is provided free of charge through a Maternal Child Health Block Grant to children 6 months through 6 years of age. The department provides this service through the office of the local WIC Program (Women, Infant, and Children). Families of children who are identified as having elevated blood levels receive education and an environmental investigation. 345 children were tested through the department in 2009.

Food Protection Division

The Environmental Health Sanitarians in the Food Protection Division enforce State and County Sanitary Codes to ensure that the public is served food that meets standards for healthful and safe preparation and consumption. Restaurants, convenience stores, private clubs, lunch trucks, grocery stores, bars, taverns, certain non-profit organizations, schools, mobile vendors and temporary units receive unannounced inspections routinely throughout the year. In 2009, Sanitarians performed over 1,000 inspections of retail food service establishments.

Working with public health nurses, physicians and Indiana State Department of Health Field Epidemiologist, sanitarians promptly investigate incidents of suspected foodborne disease. Sanitarians respond to fires involving food service establishments. As a result of fire damage, sanitarians may order food products to be embargoed, condemned, denatured or destroyed.

Retail establishment's floor plans, equipment and menus are reviewed to ensure that the establishment is capable of storing, preparing and serving safe food products. The plans must meet the Retail Food Establishment Sanitation Regulations as set forth by the Indiana State Department of Health.

2009 Highlights:

- Twelve ServSafe® Food Protection Manager Certification exams were proctored for approximately 165 retail personnel from LaPorte, Porter, Starke and St. Joseph Counties and from Michigan.
- A new database has been implemented. The database will also support electronic inspections.
- Educational materials, applications, code and county ordinance links as well as other downloadable material were updated on the counties website.
- The Indiana State Department of Health issued over 322 recalls on manufactured food products throughout the year. A majority of the recalls were due to the Peanut Corporation of America recall. When a recall is received the appropriate establishments are contacted by an inspector either in person, via fax or phone call. The state issued 8 health advisories on various products in 2009.
- The division attended four local Indiana Environmental Health Association chapter meetings and hosted one of those meetings. Sanitarian from LaPorte County continues to serve as the local chapter treasurer.
- The staff attends the bimonthly Indiana Environmental Health Association Food Protection Committees and the Fall Educational Conference.

Statistical Summary

Licenses Issued

<u>Type</u>	<u>2007</u>	<u>2008</u>	<u>2009</u>
Food Service Establishments	500	527	555
Mobile Food Units	41	38	47
Temporary Food Establishments	183	216	221
Probationary Permits	56	67	57

Inspection Activity

<u>Type</u>	<u>2007</u>	<u>2008</u>	<u>2009</u>
Retail Food Service	1006	1036	1086
School Kitchens	84	86	86
Temporary/Mobile Food Services	221	254	333
Fire Investigations	4	4	2
Non-Profit Organizations	34	34	36
Complaint Investigations	62	57	76
Possible Foodborne Illness Investigations	10	12	31
Food Recalls	69	51	322
Consultations (field/office/phone)	1189	1062	1201
Temporary Closures	2	2	3

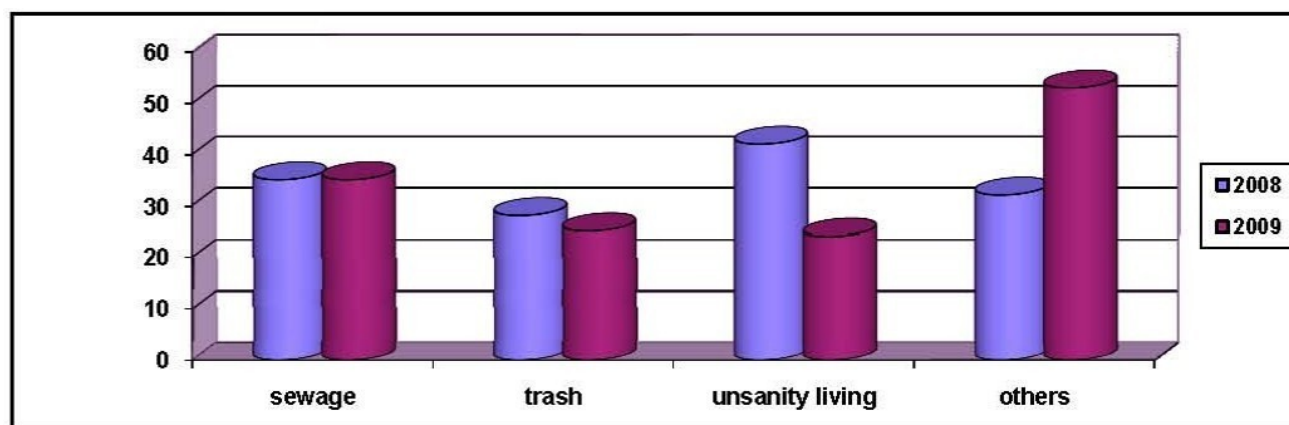
ENVIRONMENTAL HEALTH SERVICE

The Environmental Health programs serve to prevent disease, preserve the environment and improve the quality of life. The environmental health section makes sure that the environment and health of the public is the best that it can be with our limited resources. The environmental section implements a wide variety of environmental health programs. These programs are made up of four major sections: environmental/sanitation complaints, on-site sewage system, water laboratory and public and semi-public pools, wading pools and spas. Each section specializes to assist and offer expertise to the citizens of LaPorte County. Along with the four major sections, the environmental health section implemented two new programs: Lead Risk Assessment and Outdoor Hydronic Heaters. The environmental health section continues to sample the waters of Lake Michigan and the inland beaches of LaPorte County and run the vector control program (mosquito control). There are seven full time positions and three interns (summer only) positions to assist us with these programs.

Environmental/Sanitation Complaints

This section handles all complaints made to the health department. Complaints range from trash and garbage to unsanitary living conditions. County residents most commonly submit complaints through anonymous phone calls, letters, or visits to the office. Occasionally, the complaint process is initiated by county officials as they are observed in the field or through other county agencies (i.e. building department, animal control, adult protection service.) Once a complaint is received and found to be an issue that the health department can assist in, an initial inspection of the site is conducted to confirm the validity of the complaint. If the complaint is found to be invalid, it is closed. If the complaint is found to be valid, then county officials will consult with the subject of the complaint and inform them of the appropriate action that needs to be taken in order to remediate the situation.

Total complaints:	2008	2009
Abandoned property	2	3
Animals	0	3
Unsanitary living	21	24
House condemnation	1	0
Trash & Garbage	27	25
Dump sites	2	3
High weeds/grass	2	7
Open burning	3	5
Indoor air	6	12
Outdoor air Pollution	4	2
Insects and mice	8	4
Septic / sewage	35	35
Water Pollution	1	1
Stagnant Swimming Pool	2	2
Tires	0	3
Housing	0	3
Drinking Water	0	2
Rats	0	1
Hazardous Material	0	2



Lead Risk Assessments

The Environmental Health section of the health department has a licensed lead risk inspector/assessor on staff. The assessor/inspector investigates the interior and exterior of homes within the county for the presence of deteriorating lead based paint and other lead hazards. When ingested, lead based paint can cause learning disabilities and behavioral problems in young children. Lead risk assessments/inspections are performed as required by the Indiana State Department of Health (ISDH) and in compliance with Indiana Administrative Code Title 410, Article 29 Reporting Monitoring and Prevention of Lead Poisoning.

The inspection/assessment process is prompted when a health department nurse is notified, usually by a licensed physician or ISDH, that a child has been identified with an Elevated Blood Lead Level (EBLL) in their system. This notification prompts the inspector/assessor to contact the child's parents/guardians and set up an initial consultation within the home (either private or rental). At this time an interview is conducted, and paint chip samples and dust wipe samples are collected throughout the home. These samples are then sent to the ISDH Indoor Air Quality Laboratories for analysis. If lead hazards are found to exist within the home, then the assessor/inspector provides additional consultation with the property owner by prescribing the appropriate actions best suited to remediate the situation within a given prescribed timeframe. In total, there were 4 lead risk assessments/inspections completed in 2009.

LPCHD has recently received approximately \$23,000 in grant money from ISDH for the purpose of further implementing and improving our Childhood Lead Poisoning Prevention Program (CLPPP). A portion of this money is going to be used towards the purchase of a Niton X-Ray Fluorescence (XRF) Analyzer for during lead risk assessments/inspections. The remaining money will go towards educational materials for various target groups, supplies, certifications and specialized trainings, in addition to any office equipment needed to successfully run our program.

Outdoor Hydronic Heater Program (Outdoor Wood Boilers/Outdoor Wood Burning Furnaces)

On August 7, 2007, an Ordinance for Regulation of Outdoor Hydronic Heaters (Ordinance 2007-10-B) was enacted in La Porte County. The La Porte County Health Department is charged with ensuring compliance as it pertains to health and welfare with sole local regulatory authority. The Ordinance requires that outdoor hydronic heating units meet specific smoke density requirements (Opacity), and we have two environmental health specialists who are certified in *EPA Method 9-Visible Determination of the Opacity of Emissions from Stationary Sources* semiannually as required by the EPA. Besides departmental regulatory duties, our on-going strategy for health and welfare compliance includes educational assistance about the potential adverse health effects associated with wood use as a home heating fuel, and educational assistance to current and potential wood boiler owners. An additional component is the information we provide within an area of our website dedicated to Outdoor Hydronic Heaters. We ensure that the latest EPA information, names of units that have been lab-tested and certified (cleaner burning units), is provided to encourage purchase of only the cleanest burning units available. At the end of 2009, there are 143 registered Outdoor Hydronic Heaters operating in La Porte County.

Public Swimming Pools

The Environmental staff continues to inspect and review plans for all public and semi-public pools in LaPorte County. There were 32 indoor and 33 outdoor public and semi-public pools that were inspected 4 times last year by the environmental staff. One hundred seventy four inspections were conducted in 2009. This figure does not include follow-up return trips or consultations. Twelve pools were closed once in 2009. Two pools were closed twice and one pool was closed three times. Each closure usually was due to failed bacteriological tests required weekly by the health department. All pools have re-opened. The environmental section has 5 staff members that are Certified Pool Operators. All pools in LaPorte County must employ a certified pool operator to operate their pools. These pools are a mix of recreational pools, spas, wading pools, diving pools, therapy pools, and competition lap pools. They are located at YMCA's, hotels, condominiums, apartments, neighborhood associations, Country Clubs, Athletic Clubs, schools, rehabilitation facilities, a community home, and a marina. No pool permits were removed due to non-compliance of a rule that was enforced by the Health Department. A pool may have been closed due to failure of their weekly water sampling. They cannot fail two consecutive samples or three samples in a six week period without being closed until a satisfactory sample is achieved. Guidelines for inspection are set forth in the Indiana State Department of Health Rule 410 IAC 6-2.1 and LaPorte County Ordinance No. 15. We are striving for compliance with our new ordinance and with the Federal Virginia Grame Baker Law signed into law December of 2007. New pools will be opening in 2010.

Vector control (West Nile Virus)

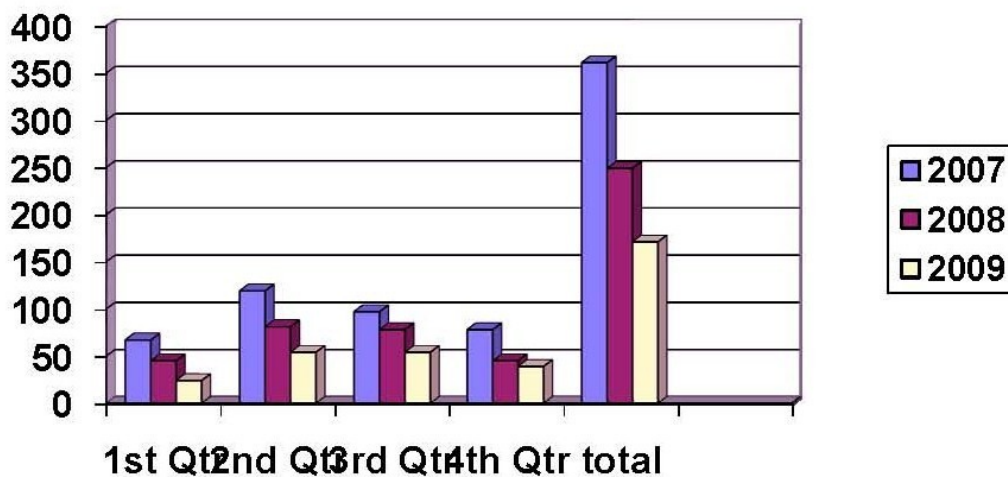
Once again the health department conducted surveillance to determine the spread of the West Nile Virus. During the months of May thru September the environmental section set up mosquito traps throughout the county and applied larvicides in areas where needed. Thousands of mosquitoes were sent to the Indiana State Department of Health (ISDH) Molecular Laboratory for West Nile Virus (WNV) testing. No pools tested positive for the 2009 season. We received calls throughout the season for dead birds. However, the birds that were reported were not species of interest for WNV.

On-Site Sewage System (OSS)

The OSS section works with property owners and developers to ensure that septic system installations are in complete compliance with minimum standards established by Indiana State Department of Health Rule 410 IAC 6-8.1, Rule 410 IAC 6-10, Bulletin S.E. 13 and La Porte County Ordinance no.1996-22. The OSS program continues to see a decrease in activity due to the decline in building. There were 171 septic permits issued in 2009. A staff of three environmental health specialists completed over 668 individual site evaluations, plan reviews, soil borings and inspections.

Septic permits issued

	1 st qtr	2 nd qtr	3 rd qtr	4 th qtr	Total
2007	67	119	97	78	361
2008	45	81	78	45	249
2009	24	54	54	39	171



Water Laboratory

The La Porte County Health Department is one of three health departments in the state that have an on-site water laboratory. The La Porte County Health Department Water Laboratory is certified by the state to analyze drinking water and pools and spas for the presence of total coliform with E. coli confirmation, surface water, including recreational beach waters for the enumeration of E.coli, and a heterotrophic plate count for each pool and spa sample. Re-certification is done every three years by the Indiana State Department of Health. In addition, the lab offers chemistry screening analysis such as nitrate, nitrite, lead, iron and fluoride. Currently the lab is not certified in any chemistry analysis.

Our re-certification with the State of Indiana Certification officer took place in October 2007. Our next on-site inspection will be scheduled in 2010.

On September 7, 2009 our water laboratory went under renovations and was closed to the public for 4 weeks. We gained 280 square feet of working space and 39 square feet of storage space. Our Laboratory now has two separate rooms which make is more convenient to run microbiology samples on one side and chemistry samples on the other.

Our main goal for 2010 is to become certified by the State of Indiana for nitrates in drinking water. We will be purchasing a new Ion Selective Electrode (approved method by the EPA for nitrate) the first of the year and will be working closely with the ISDH Chemistry Certification Officer to get our new method up and running by the end of the year. This would benefit Public Water Supply (PWS) facilities that are required by IDEM to have an annual nitrate test on their well water. The nearest certified chemistry lab that offers nitrate testing is in Valparaiso, IN.

National Drinking Water Week

National Drinking Water Week took place May 3-9th 2009. We offered free bacteria testing on residential well water to La Porte County residence. Sample bottles were given out at the following locations: La Porte CHD office, Michigan City CHD office, Trail Creek Town Hall, Wanatah Utilities, La Crosse Town Hall, and Rolling Prairie and Fish Lake Public Libraries. 46 residences took advantage of our free testing resulting in 39 satisfactory and 7 unsatisfactory results. Participants were mailed a copy of the sample sheet with their results and those who tested positive for coliform bacteria were mailed information on how to chlorinate their well. Of the 108 bottles that were given out, 46 returned to be tested and 62 were never returned. (cost of bottles \$34.10) Total cost of program \$752.16.

Beach Sampling

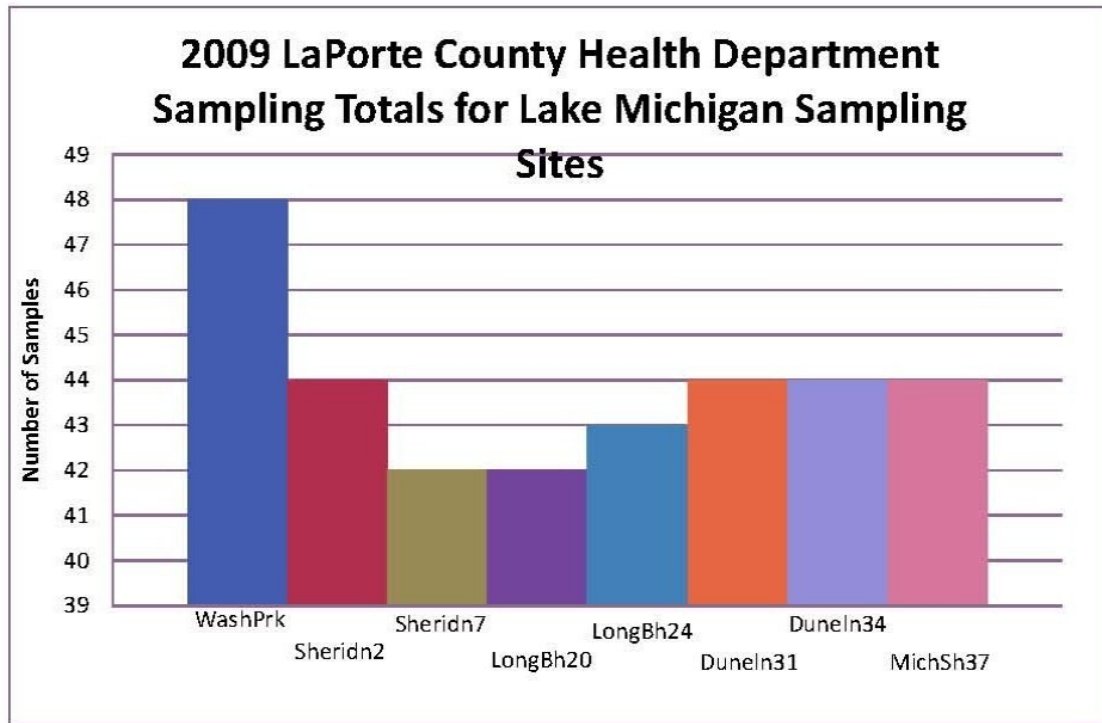
the LaPorte County Health Department (LPCHD) has completed its eighth year of contracting with the Indiana Department of Environmental Management (IDEM). This contract originally was put in place to supplement our existing program with federal funds from the Beaches Environmental Assessment and Coastal Health Act (BEACH Act). The Act was set up for states to develop and implement beach water quality monitoring and notification programs. The LPCHD has had an existing sampling and notification program for our Inland and Lake Michigan Beaches for over twenty years. We ultimately used the money to enhance our monitoring and notification program. Locally, it helped to reduce our tax base since federal money was now supplementing our program. We have used the money to buy worn out equipment for our field sampling staff such as coolers, wind meters, compasses, meter sticks, and thermometers. Phones, cooler packs, first aid kits, rain gear, hand sanitizer, sun block and clip boards have also been purchased using Beach Act money.

The LPCHD water laboratory has also benefited from the supplemental funding. It has seen a new Siemens de-ionized water system installed last year. New sampling bottles are also able to be purchased under the auspice of the BEACH Act.

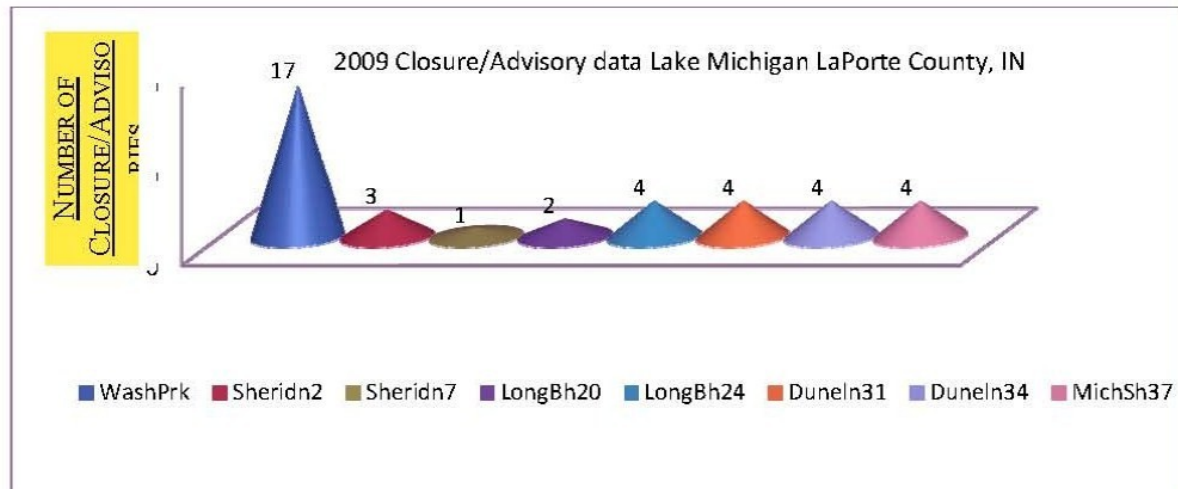
The test procedure that we use for the water samples is called Colilert. This method has an 18-22 hour turnaround time for results. At room temperature, samples are mixed with a powder substrate and put into quanti trays that have 49 large wells and 48 small wells. The trays are put through a sealer and incubated for 18-22 hours. Then they are analyzed under a black light. The lab has seen two new sealers through the federal money. Next year we hope to replace an aging autoclave that is severely leaking. In 2009, EPA expected to award \$9.9 million in grants to eligible states, territories and tribes for their beach water protection programs. EPA is still using three parameters to allocate the funding:

1. beach season length,
2. beach miles, and
3. beach use.

Indiana, New Hampshire and Minnesota, all received comparable amounts of funding for their programs, around \$200,000.



The LPCHD had an excellent sampling season. We projected taking 43 samples per site for the 2009 sampling season for Lake Michigan beaches. One sampling, Stop 20, on July 29, 2009 was missed due to construction at the access point. There were no storms on sampling days this season that halted sampling.



This year we started a three tiered approach to notification procedures. If a sample result was 235 colonies of bacteria per 100mL of water or below, the sampling site was posted with new metal interchangeable green "Good Water Quality" sign. If the result was over 235 colonies of bacteria per 100mL of water the sampling site was posted with a yellow "Caution Advisory" sign. If results were over 999 colonies of bacteria per 100 mL of water, the red "Closed Sign" was posted. Also new this year, if any of the three samples taken at Washington Park or Stop 2 were over 235 colonies of bacteria, we were required by the state department of Environmental Management to put up an advisory sign. In years past, we used the geomean of the three samples to make a decision of whether the beach waters would be closed to swimming at Washington Park and Stop 2. In our opinion, using the geomean is a better representative sample for the entire park. In 2009, we continued to use the geomean to decide whether we would re-sample the beach waters or not. If the geomean of the three samples at Washington Park or Stop 2 was over 235, it was re-sampled. If the geomean wasn't over 235, but one or more of the samples was over 235, it remained under advisory until the next sampling result. Overall, we only had 5 closures throughout the entire season that hit the over 999 colonies of bacteria threshold.

June 12, 2009	Michiana Shores Stop 37	1414
June 17, 2009	Long Beach Stop 20	2420
	Long Beach Stop 24	2420
June 29, 2009	Duneland Beach 34	1300
June 29, 2009	Duneland Beach 37	1733

Forty advisories are listed on the chart below. All were due to high e.coli. Some advisories were near rain events but all data hasn't been analyzed as of yet. Nine times multiple sites had an advisory listed on the same day. Ten times only one site had an isolated advisory. June 17 and July 17 most sites were over 235 colonies of bacteria so all sites were put under an advisory. Only looking at the geomean for Wash Park, there was 10 exceedances similarly compared to 8 in 2008. Sheridan Beach had zero exceedances over 235 using the geomean compared to four in 2008.

Notification this year was almost the same as last year. We continued with the paperless lab sheets this year. Our field log forms were used as our chain of custody and our lab forms. These were entered into two different databases on-site. One is our main access database that holds all the field data as well as e.coli results with CSO notifications and closure/advisory data. Our other database is for comparison of results using the geomean with all sites that are tested in LaPorte County. Our website www.laportecounty.org was updated daily this year by our staff. Results from Lake Michigan were also entered into the Indiana Department of Environmental Management's website. Press releases went out daily, usually by 9:00am with the previous day's data. Website was usually updated by 11:00am.

Date Sampled	Station Number	E Coli Counts	Open/Closed/Advisory	day & date of closure/advisory
12-Jun-09	Duneln31	411	Advisory	Saturday 6-13-09
12-Jun-09	Duneln34	411	Advisory	Saturday 6-13-09
12-Jun-09	MichSh37	1414	Closed	Saturday 6-13-09
17-Jun-09	Duneln31	50	Advisory	Thursday 6-18-09
17-Jun-09	Duneln34	37	Advisory	Thursday 6-18-09
17-Jun-09	LongBh20	2420	Closed	Thursday 6-18-09
17-Jun-09	LongBh24	2420	Closed	Thursday 6-18-09
17-Jun-09	MichSh37	179	Advisory	Thursday 6-18-09
17-Jun-09	Sheridn2	326	Advisory	Thursday 6-18-09
17-Jun-09	Sheridn7	17	Advisory	Thursday 6-18-09
17-Jun-09	WashPrk	770	Advisory	Thursday 6-18-09
26-Jun-09	WashPrk	517	Advisory	Saturday 6-27-09
15-Jul-09	Duneln34	548	Advisory	Thursday 7-16-09
15-Jul-09	LongBh24	345	Advisory	Thursday 7-16-09
17-Jul-09	Duneln31	238	Advisory	Saturday 7-18-09
17-Jul-09	Duneln34	276	Advisory	Thursday 7-16-09
17-Jul-09	LongBh20	32	Advisory	Saturday 7-18-09
17-Jul-09	LongBh24	291	Advisory	Thursday 7-16-09
17-Jul-09	MichSh37	199	Advisory	Saturday 7-18-09
17-Jul-09	Sheridn2	231	Advisory	Saturday 7-18-09
17-Jul-09	Sheridn7	649	Advisory	Saturday 7-18-09
17-Jul-09	WashPrk	248	Advisory	Saturday 7-18-09
22-Jul-09	LongBh20	261	Advisory	Thursday 7-23-09
22-Jul-09	MichSh37	435	Advisory	Thursday 7-23-09
22-Jul-09	Washprk	687	Advisory	Thursday 7-23-09
29-Jul-09	Duneln31	866	Advisory	Thursday 7-30-09
29-Jul-09	Duneln34	1300	Closed	Thursday 7-30-09
29-Jul-09	LongBh24	261	Advisory	Thursday 7-30-09
29-Jul-09	MichSh37	1733	Closed	Thursday 7-30-09
29-Jul-09	WashPrk	517	Advisory	Thursday 7-30-09
03-Aug-09	WashPrk	435	Advisory	Tuesday 8-4-09
04-Aug-09	WashPrk	435	Advisory	Tuesday 8-4-09
07-Aug-09	WashPrk	579	Advisory	Saturday 8-8-09
08-Aug-09	WashPrk	488	Advisory	Saturday 8-8-09
09-Aug-09	WashPrk	435	Advisory	Saturday 8-8-09
12-Aug-09	WashPrk	236	Advisory	Thursday 8-13-09
17-Aug-09	WashPrk	411	Advisory	Tuesday 8-18-09
19-Aug-09	WashPrk3	517	Advisory	Tuesday 8-18-09
26-Aug-09	MichSh37	291	Advisory	Thursday 8-27-09
26-Aug-09	Sheridn2	387	Advisory	Thursday 8-27-09
26-Aug-09	WashPrk	770	Advisory	Thursday 8-27-09
31-Aug-09	Duneln31	411	Advisory	Tuesday 9-1-09
31-Aug-09	Sheridn2	326	Advisory	Tuesday 9-1-09
31-Aug-09	WashPrk	285	Advisory	Tuesday 9-1-09
01-Sep-09	WashPrk1	276	Advisory	Tuesday 9-1-09

BIRTH AND DEATH STATISTICS

2009

BIRTH

Born in LaPorte.....656 (male 334) (female 322)
Born in Michigan City...732 (male 362) (female 370)

LAPORTE COUNTY TOTAL = 1388

DEATH

Died in LaPorte..... 585
Died in Michigan City 501

LAPORTE COUNTY TOTAL = 1086

Editor's Note; It is unfortunate that at the time of this publication the Indiana State Board of Health, (owner of the records), is unable to furnish any viable report on this subject for the 2009 calendar year.